



Ka Band Dual Monopulse Comparator

MC22006



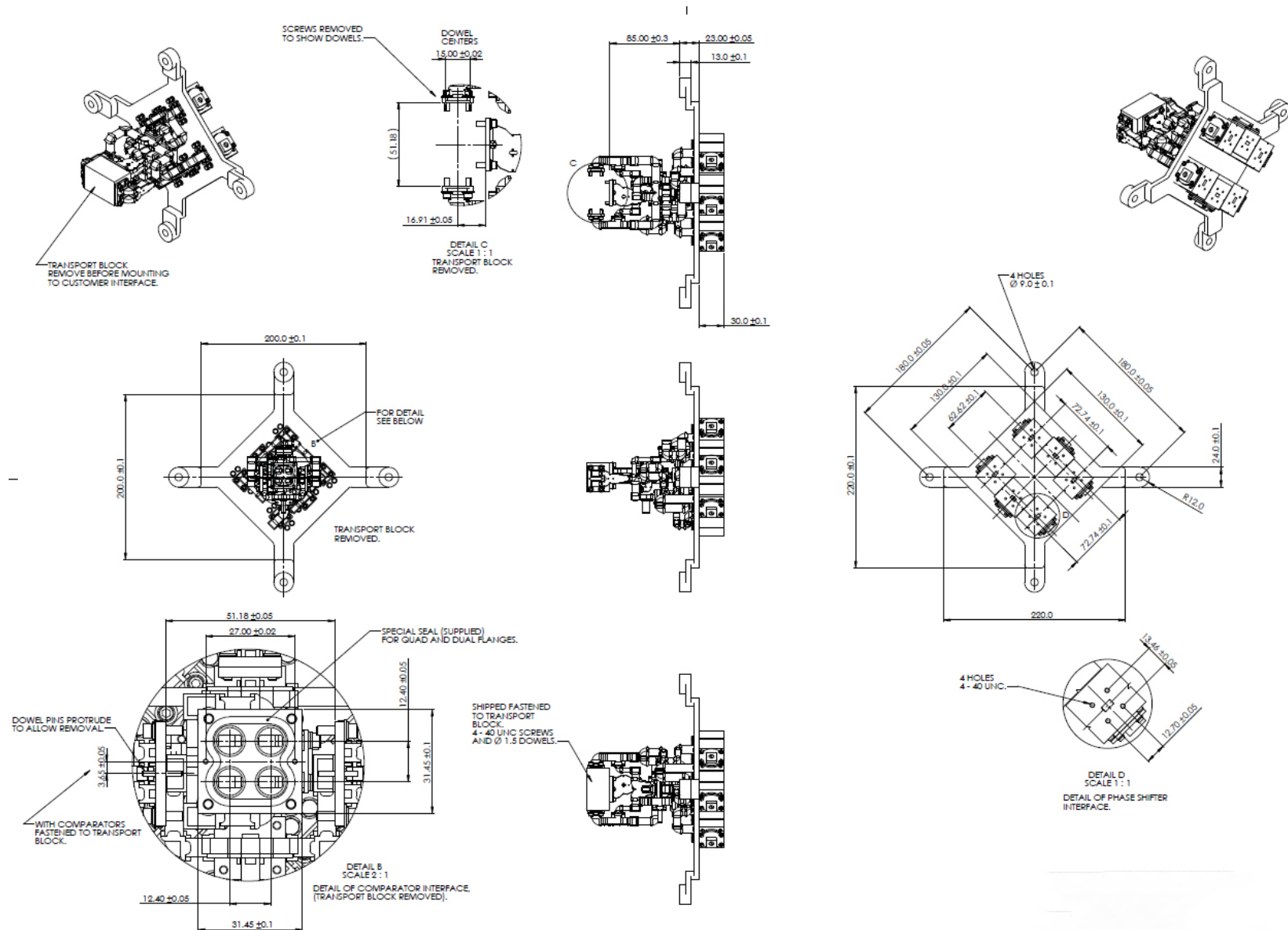
The MC22006 compact high-performance, dual monopulse comparator is designed and manufactured by Sylatech. This product features support brackets and can be redesigned to suit your requirements. Please contact our sales team for further details.

T: 01751 432 355 E: info@sylatech.com

SPECIFICATION

Frequency Range	Ka-Band (waveguide)	29 to 31 GHz
Return Loss	SUM Port	14 dB Min
	DIFF Port	12 dB Min
Insertion Loss		0.9 dB Max
Isolation	SUM - DIFF Ports	30 dB
Amplitude Unbalance		+/- 0.4 dB
Phase Unbalance		4 ° Max
Phase Variation with Frequency		4 ° Max





Engineering your future



Kirkdale Road,
Kirkbymoorside, YO62 6PX
E: info@sylatech.com
T: +44 (0) 1751 432 355
www.sylatech.com